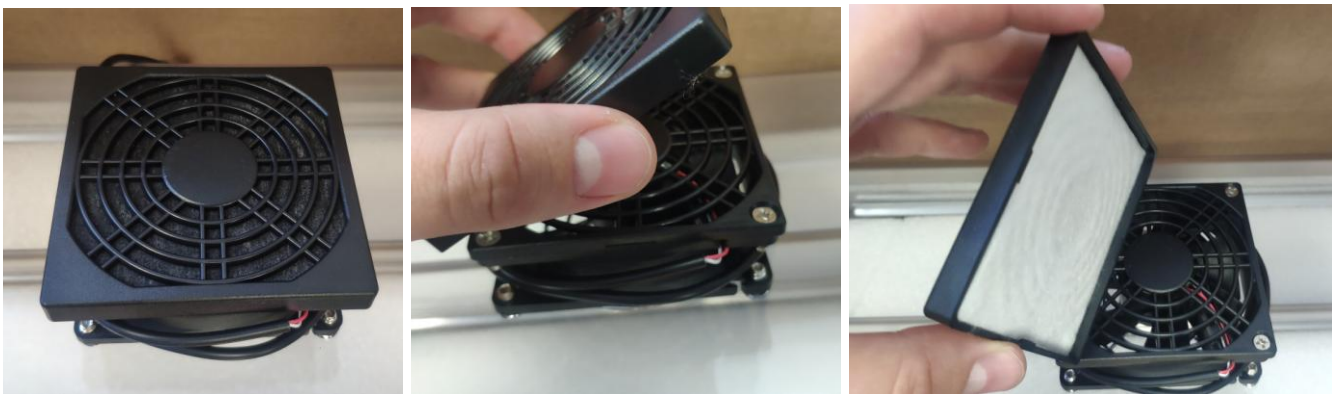


Inspecting the Flow Gen dome ventilator

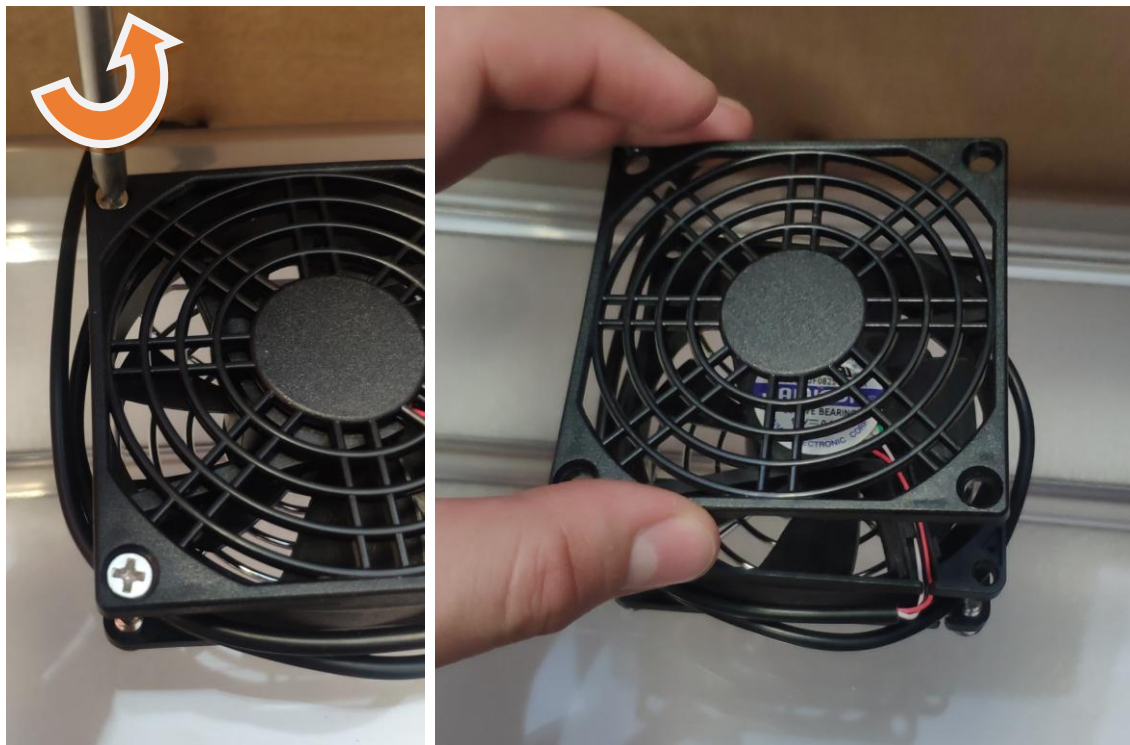
Unplug your printer before beginning the process!

You will need a **Philips type screwdriver** for mounting.

1. Remove the filter panel from the dome fan.

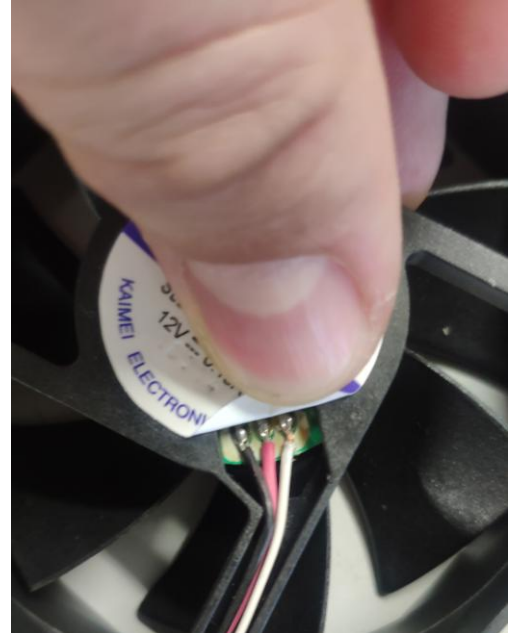
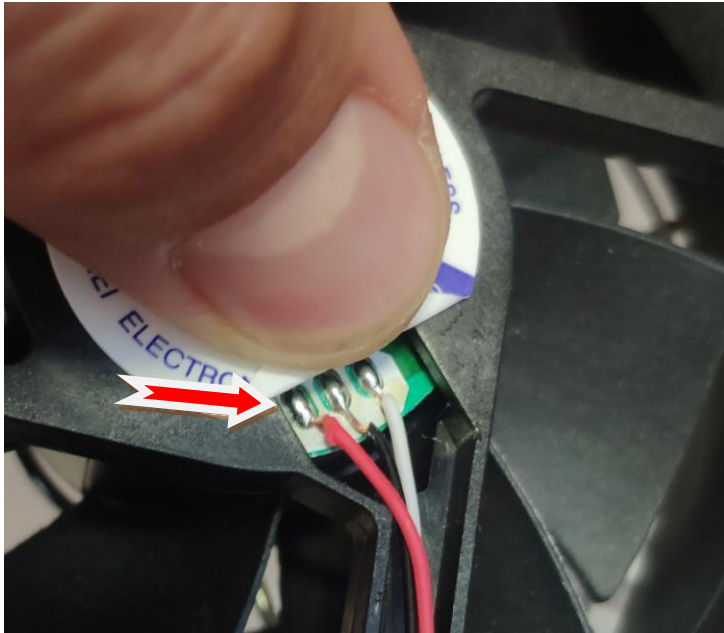


2. Then use a Phillips screwdriver to remove the protective cover from the fan.



CraftBot
FLOW GENERATION
Inspired by you

3. As a final step, check the wiring sequence of your fan based on the images below. (**Correct order: Black - Red - White**)



5 YEARS
OR 5000 HOURS
WARRANTY

FOR THE RELIABILITY AND COST EFFECTIVITY